

# collection notes

CLASSIFICATION ORDER

cabi  
FALL 2020



## TABLE OF CONTENTS

JACKETS	1
SWEATERS	3
WOVEN TOPS	6
SLEEVELESS WOVEN TOPS	10
KNIT TOPS	12
SLEEVELESS KNIT TOPS	15
LEGGINGS & TROUSERS	16
JEANS	18
SKIRTS	19
DRESSES	20
ACCESSORIES	21
JEWELRY	21

Sampled sizing for specific pieces in the Collection as listed:

<sup>1</sup>included in Introductory Collection

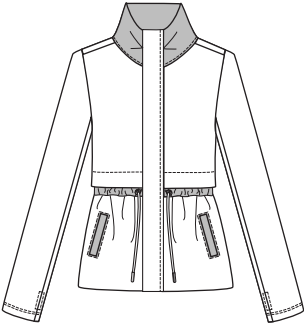
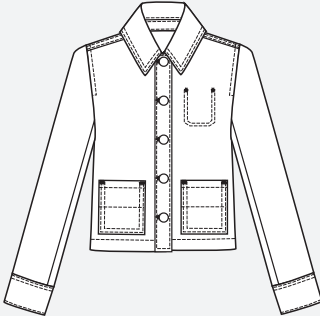
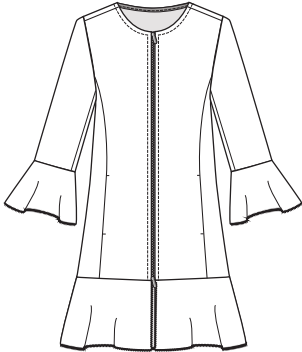

<sup>2</sup>included in first Seasonal Inventory purchased

<sup>3</sup>included in Introductory Collection and first Seasonal Inventory purchased

<sup>4</sup>included in Extended Size Pack

**X**extended sizes available

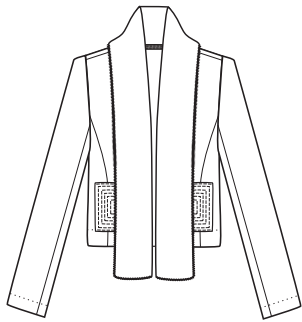
JACKETS

<div>3911</div> <div>ATC Jacket</div> <div>SIZE: XS-XL</div> <div>PRICE: USA 159   CAN 199   UK 124</div> <div></div> <div><div>INVENTORY SIZE: M</div><div>CONTENT: Self: 65% Rayon, 31% Nylon, 4% Spandex Contrast: 70% Rayon, 26% Nylon, 4% Spandex Trim: 100% Viscose</div><div>CARE: Turn garment inside out and place in a mesh bag. Machine wash separately in cold water on the delicate cycle. Do not bleach. Lay flat to dry. Steam iron on low if needed. Can be dry cleaned in a mesh bag.</div></div> <div><div>FIT &amp; FEATURES</div><div><ul style="list-style-type: none"><li>• Camo</li><li>• Band contrast collar</li><li>• Hidden zip placket</li><li>• Drawstring waist</li><li>• Contrast under sleeves</li><li>• Hip pockets with snaps</li><li>• Thumbholes</li><li>• Printed sleek ponte double knit with solid contrast</li></ul></div><div>INSIDER INFO</div><div><ul style="list-style-type: none"><li>• Camo on the front, all black on the back</li><li>• The Design Team went through several iterations of the print to create the perfect feminine and cloud-like camo</li><li>• This silhouette was inspired by a high-end designer piece that the Design Team reimagined into a sporty, chic style</li></ul></div><div>CLIFFSNOTES</div><div><ul style="list-style-type: none"><li>• All The Camo</li><li>• Stand out, not blend in with this camo</li></ul></div></div>	<div>3909</div> <div>Citizen Jacket</div> <div>SIZE: XS-XL</div> <div>PRICE: USA 149   CAN 189   UK 119</div> <div></div> <div><div>INVENTORY SIZE: S</div><div>CONTENT: 99% Cotton, 1% Spandex</div><div>CARE: Machine wash separately, inside out, in cold water on the delicate cycle. Do not bleach. Tumble dry low, remove promptly. Warm iron if needed.</div></div> <div><div>FIT &amp; FEATURES</div><div><ul style="list-style-type: none"><li>• Dijon</li><li>• Cropped, boxy shape</li><li>• Patch pockets</li><li>• Contrast stitching</li><li>• Jean tack buttons</li><li>• Soft and substantial baby corduroy</li></ul></div><div>INSIDER INFO</div><div><ul style="list-style-type: none"><li>• Beautiful mustard yellow</li></ul></div><div>CLIFFSNOTES</div><div><ul style="list-style-type: none"><li>• The drama is in the Dijon</li><li>• You're a lock on the citizenship award in this one</li></ul></div></div>	<div>3902</div> <div>Flounce Jacket¹</div> <div>SIZE: XXS-XXL</div> <div>PRICE: USA 179   CAN 219   UK 136</div> <div></div> <div><div>INVENTORY SIZE: S</div><div>CONTENT: 65% Polyester, 34% Rayon, 1% Spandex</div><div>CARE: Turn garment inside out and place in a mesh bag. Machine wash separately in cold water on the delicate cycle. Only non-chlorine bleach if needed. Do not twist or wring. Lay flat to dry. Warm iron if needed. Can be dry cleaned.</div></div> <div><div>FIT &amp; FEATURES</div><div><ul style="list-style-type: none"><li>• Classic Tartan</li><li>• Easy-fitting shape</li><li>• Hits at the mid-thigh and has flounce at the hem</li><li>• Three-quarter sleeves with flounce</li><li>• Jewel neckline</li><li>• Two-way zipper</li><li>• Floral seam binding</li></ul></div><div>INSIDER INFO</div><div><ul style="list-style-type: none"><li>• Lightweight fabric</li></ul></div><div>CLIFFSNOTES</div><div><ul style="list-style-type: none"><li>• Perfect pattern mixer</li><li>• We're keeping this "borrowed from the boys" look</li></ul></div></div>	<div>3910</div> <div>Freedom Jacket</div> <div>SIZE: XS-XXL</div> <div>PRICE: USA 149   CAN 189   UK 119</div> <div></div> <div><div>INVENTORY SIZE: M</div><div>CONTENT: Self: 100% Cotton Belt: 100% Cotton</div><div>CARE: Machine wash, inside out, with like colors in cold water on the delicate cycle. Do not bleach. Lay flat to dry. Warm iron if needed. Can be dry cleaned.</div></div> <div><div>FIT &amp; FEATURES</div><div><ul style="list-style-type: none"><li>• Indigo</li><li>• Longer length, hits at the low hip</li><li>• Straight and easy fit</li><li>• Shirttail hem</li><li>• Self-belt with lace-up back</li><li>• Cotton stretch, medium weight denim</li></ul></div><div>INSIDER INFO</div><div><ul style="list-style-type: none"><li>• Slightly washed down</li><li>• Workingman style</li><li>• Back tie detail can also be tied in front</li></ul></div><div>CLIFFSNOTES</div><div><ul style="list-style-type: none"><li>• Utility in the front, feminine in the back</li><li>• Sometimes the clothes DO make the [wo]man</li></ul></div></div>
--	---	---	--

JACKETS

3904  
Houndstooth Jacket

SIZE: XS-XL  
PRICE: USA 149 | CAN 189 | UK 119



**INVENTORY SIZE: S**  
**CONTENT:** 60% Polyester, 39% Rayon, 1% Spandex  
**CARE:** Machine wash separately, inside out, in cold water on the delicate cycle. Only non-chlorine bleach if needed. Lay flat to dry. Cool iron on the reverse side if needed. Can be dry cleaned.

**FIT & FEATURES**

- Black and White
- Sits close to the body
- Slightly cropped length
- Wide scarf collar detail
- Fashion pockets with stitch detail
- Soft and substantial lightweight double knit

**INSIDER INFO**

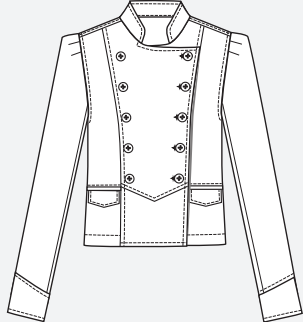
- Shawl style jacket
- Yarn-dyed knit

**CLIFFSNOTES**

- Make a statement without being loud
- The hunt for perfect suiting is over when paired with the Houndstooth Skirt or Trouser

3913  
Lennon Jacket

SIZE: XS-XL  
PRICE: USA 159 | CAN 199 | UK 124



**INVENTORY SIZE: M**  
**CONTENT:** 71% Cotton, 27% Viscose, 2% Spandex  
**CARE:** Turn garment inside out and place in a mesh bag. Machine wash separately in cold water on the delicate cycle. Only non-chlorine bleach if needed. Do not twist or wring. Lay flat to dry. Warm iron if needed. Can be dry cleaned.

**FIT & FEATURES**

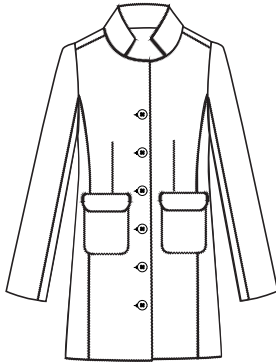
- Legion Teal
- Tailored shape
- Sits close to body
- Hits at the high hip
- Double breasted
- Band collar
- Pleats at top sleeves
- V-shaped seam at waist
- Wide cuffs
- Princess seams
- Gold crest custom buttons
- Novelty stretch corduroy

**INSIDER INFO**

- Corduroy has a cross-hatch pattern
- CLIFFSNOTES**
- Imagine all the people you'll see
- Imagine you're actually in the band

3903  
Maestro Jacket<sup>1, 4</sup>

SIZE: XS-XXL  
PRICE: USA 179 | CAN 219 | UK 136



**INVENTORY SIZE: M**  
**CONTENT:** 68% Rayon, 28% Nylon, 4% Spandex  
**CARE:** Turn garment inside out and place in a mesh bag. Machine wash separately in cold water on the delicate cycle. Do not bleach. Lay flat to dry. Steam iron on low if needed. Can be dry cleaned in a mesh bag.

**FIT & FEATURES**

- Black
- Slim shape
- Long length, hits at the thigh
- Band collar
- Matte black snaps
- Snap front
- Patch pockets at the hips
- Overstitch details
- Diagonal rib ponte

**INSIDER INFO**

- 5-needle threading
- Sporty details
- CLIFFSNOTES**
- The virtuoso of toppers
- Wear whether you're conducting business or pleasure

3908  
McQueen Coat<sup>1</sup>

SIZE: XXS-XL  
PRICE: USA 169 | CAN 209 | UK 129



**INVENTORY SIZE: M**  
**CONTENT:** Self Front: 100% Cotton  
Self Back: 100% Polyester  
Contrast: 98% Cotton, 2% Spandex  
**CARE:** Turn garment inside out and place in a mesh bag. Machine wash separately in cold water on the delicate cycle. Only non-chlorine bleach if needed. Do not twist or wring. Lay flat to dry. Warm iron if needed. Can be dry cleaned.

**FIT & FEATURES**

- Classic Tan
- Boxy and slightly oversized shape
- Exaggerated collar
- Kangaroo pockets
- Zip and snap closure
- Rib cuffs
- Faux-shearling details
- Thick and super soft fleece knit lining

**INSIDER INFO**

- Moto style
- Very on par with the Sherpa trend
- Same fabric as the Fall '19 New Arrival Après-Ski Hoodie, both the outside knit and the inside lining

**CLIFFSNOTES**

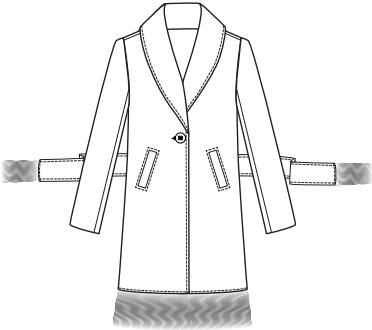
- More like MY Queen Coat
- Cozy never looked so cool

## SWEATERS

### 3901 Regency Coat<sup>1</sup>

SIZE: XS-XL

PRICE: USA 299 | CAN 369 | UK 234



#### INVENTORY SIZE: M

CONTENT: Self: 93% Polyester, 7% Wool

Belt: 93% Polyester, 7% Wool

Lining: 100% Polyester

**CARE:** Turn garment inside out and place in a mesh bag. Machine wash separately in cold water on the delicate cycle. Do not bleach. Lay flat to dry. Steam iron on low if needed. Can be dry cleaned in a mesh bag.

#### FIT & FEATURES

- Noble Plaid
- Tailored, long coat
- Skims the body
- Shawl collar
- Self-tie with fringe
- Long fringe hem
- Soft and substantial woven with no stretch
- Polka dot partial lining

#### INSIDER INFO

- Fringe on belt and hem is handmade
- Back and sleeve lining is polka dot
- Sleeves have functioning buttons

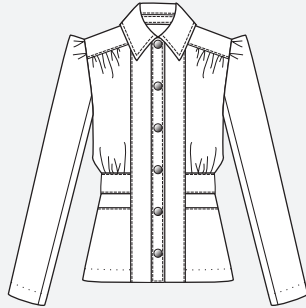
#### CLIFFSNOTES

- The Fringe of Fashion
- It's your cover shot: classic couture

### 3906 Spencer Jacket

SIZE: XS-XL

PRICE: USA 169 | CAN 209 | UK 129



#### INVENTORY SIZE: S

CONTENT: 68% Rayon, 28% Nylon, 4% Spandex

**CARE:** Machine wash separately, inside out, in cold water on the delicate cycle. Only non-chlorine bleach if needed. Lay flat to dry. Cool iron on the reverse side if needed. Can be dry cleaned.

#### FIT & FEATURES

- Paprika
- Tailored shape
- Sits close to body
- Vintage-inspired
- Front and back yokes with shirring
- Pleats at top of sleeves
- Custom covered snap closures
- Band at waist
- Diagonal rib ponte

#### INSIDER INFO

- Deep pockets
- Nips you in at the waist
- A late '30s vintage designer treasure, Becky and Kris found and reimagined this piece into the chicest modern shape. Think of Katharine Hepburn in *Bringing Up Baby*.

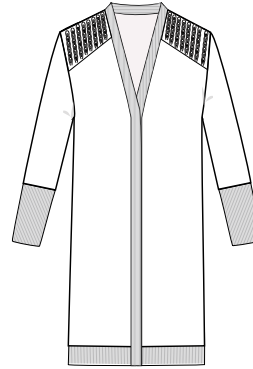
#### CLIFFSNOTES

- Classic style of Katharine Hepburn
- Frankly, I find myself fascinating

### 3881 Coffee Shop Cardigan<sup>1</sup>

SIZE: XXS-XL

PRICE: USA 159 | CAN 199 | UK 124



#### INVENTORY SIZE: S

CONTENT: 56% Cotton, 29% Acrylic, 8% Polyester, 4% Nylon, 2% Metallic Polyester, 1% Spandex

**CARE:** Turn garment inside out and place in a mesh bag. Machine wash separately in cold water on the delicate cycle. Only non-chlorine bleach if needed. Do not twist or wring. Lay flat to dry. Warm iron if needed. Can be dry cleaned.

#### FIT & FEATURES

- Gray Rainbow
  - Long coat-style cardigan
  - Oversized
  - V-neckline
  - Pointelle and rib details
  - Fuzzy yarn
  - Heavy sweater knit
- INSIDER INFO**
- Either fold or double hang this garment
  - Yarn pattern in back

#### CLIFFSNOTES

- Carpool and coffee couture
- The star of every Fall runway show

### 3884 Dani Pullover<sup>1</sup>

SIZE: XXS-XL

PRICE: USA 109 | CAN 139 | UK 84



#### INVENTORY SIZE: M

CONTENT: 61% Cotton, 38% Rayon, 1% other fibers

**CARE:** Turn garment inside out and place in a mesh bag. Machine wash separately in cold water on the delicate cycle. Only non-chlorine bleach if needed. Do not twist or wring. Lay flat to dry. Warm iron if needed. Can be dry cleaned.

#### FIT & FEATURES

- Dazzle Stripe
- Zebra jacquard pattern
- Relaxed fit, boat neckline
- Dolman sleeves
- Shirttail hem
- Hits at the low hip

#### INSIDER INFO

- A little oversized to wear with leggings
- Soft and lightweight intarsia knit

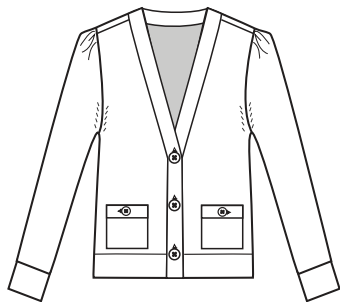
#### CLIFFSNOTES

- Chic and sophisticated, feels like a sweatshirt
- Play "who wore it best" with this one!

SWEATERS

3891  
Goals Cardigan¹

SIZE: XS-XL  
PRICE: USA 99 | CAN 119 | UK 78



**INVENTORY SIZE: M**  
**CONTENT:** 62% Cotton, 38% Viscose  
**CARE:** Turn garment inside out and place in a mesh bag. Machine wash separately in cold water on the delicate cycle. Only non-chlorine bleach if needed. Do not twist or wring. Lay flat to dry. Warm iron if needed. Can be dry cleaned.

**FIT & FEATURES**

- Black
- Slightly boxy and cropped shape
- Deep V-neck cardi
- Oversized buttons
- Gathers at tops of sleeves
- Tiny pockets
- Medium weight sweater knit

**INSIDER INFO**

- Easy to wear, pair with anything

**CLIFFSNOTES**

- #OutfitGoals
- You goals digger, you!

3888  
Passage Cardigan¹

SIZE: XS-XL  
PRICE: USA 99 | CAN 119 | UK 78



**INVENTORY SIZE: M**  
**CONTENT:** 100% Cotton  
**CARE:** Turn garment inside out and place in a mesh bag. Machine wash separately in cold water on the delicate cycle. Only non-chlorine bleach if needed. Do not twist or wring. Lay flat to dry. Warm iron if needed. Can be dry cleaned.

**FIT & FEATURES**

- Molten Lava
- Sits close to body
- V-neck cardi
- Hidden snap placket with grosgrain
- Pointelle details on sleeves
- Back is reversed ribbed with a slight A-line shape
- Hits at the mid hip
- Medium weight sweater knit

**INSIDER INFO**

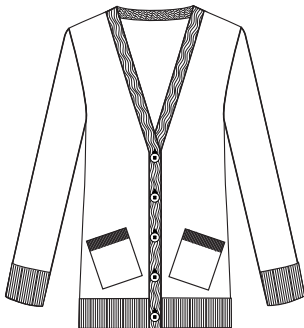
- Baby rib detail
- Small flounce in the back
- Subtle details, yet classic

**CLIFFSNOTES**

- Rite of passage
- Walk away “wow”

3882  
Slant Pocket Cardigan¹

SIZE: XS-XL  
PRICE: USA 129 | CAN 159 | UK 99



**INVENTORY SIZE: L**  
**CONTENT:** 61% Cotton, 38% Acrylic, 1% other fibers  
**CARE:** Turn garment inside out and place in a mesh bag. Machine wash separately in cold water on the delicate cycle. Only non-chlorine bleach if needed. Do not twist or wring. Lay flat to dry. Warm iron if needed. Can be dry cleaned.

**FIT & FEATURES**

- Navy
- Mid-length cardigan, provides great coverage
- Easy fit
- Straight shape
- V-neckline with button closures
- Intricate cable pattern
- Slanted pockets
- Heavy sweater knit

**INSIDER INFO**

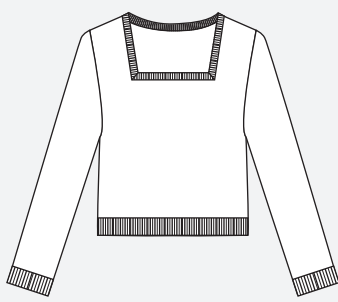
- Similar in fit to the Fall '18 Aerial Cardigan

**CLIFFSNOTES**

- Be a good neighbor
- Don't let the name fool you

3883  
Square Neck Pullover

SIZE: XS-XL  
PRICE: USA 99 | CAN 119 | UK 78



**INVENTORY SIZE: S**  
**CONTENT:** 82% Cotton, 18% Nylon  
**CARE:** Turn garment inside out and place in a mesh bag. Machine wash separately in cold water on the delicate cycle. Only non-chlorine bleach if needed. Do not twist or wring. Lay flat to dry. Warm iron if needed. Can be dry cleaned.

**FIT & FEATURES**

- Mulberry
- Shrunk, cropped fit
- Sits close to body
- Square neckline
- Lattice pattern with seed stitch detail
- Medium weight sweater knit

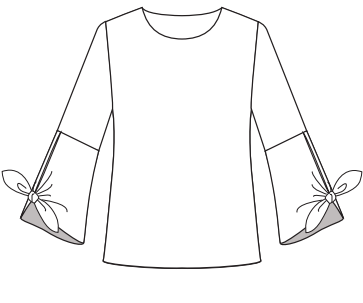
**INSIDER INFO**

- Washed-down burgundy
- Intentionally shorter to pair with the matching All-Purpose Cami

**CLIFFSNOTES**

- Stands alone, but plays well with others
- Not sure how we got the name

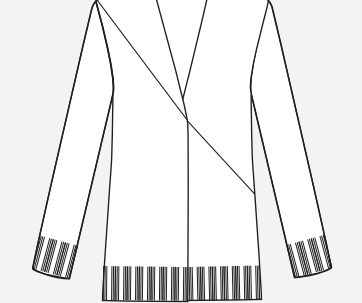
3887  
Tether Pullover <sup>1</sup>  
SIZE: XS-XL  
PRICE: USA 99 | CAN 119 | UK 78



**INVENTORY SIZE: M**  
**CONTENT:** 60% Cotton, 40% Rayon  
**CARE:** Turn garment inside out and place in a mesh bag. Machine wash separately in cold water on the delicate cycle. Only non-chlorine bleach if needed. Do not twist or wring. Lay flat to dry. Warm iron if needed. Can be dry cleaned.

- FIT & FEATURES**
- Orchid
  - Sits close to body
  - Dropped armholes
  - Dramatic bell sleeves with tie
  - Crew neckline
  - Hits at the high hip
  - Medium weight sweater knit
- INSIDER INFO**
- Flutter sleeves that can be tied in several ways
  - Compact yarn, almost like a sweatshirt feel
- CLIFFSNOTES**
- It doesn't tie you down
  - You'll leave no loose ends behind

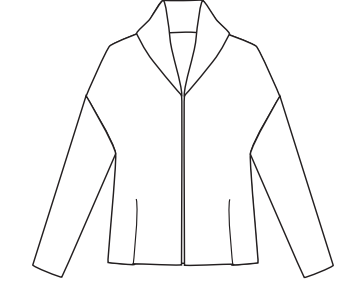
3886  
Tilt Cardigan  
SIZE: XXS-XXL  
PRICE: USA 134 | CAN 169 | UK 104



**INVENTORY SIZE: S**  
**CONTENT:** 53% Cotton, 35% Acrylic, 10% Polyester, 1% Spandex, 1% other fibers  
**CARE:** Turn garment inside out and place in a mesh bag. Machine wash separately in cold water on the delicate cycle. Only non-chlorine bleach if needed. Do not twist or wring. Lay flat to dry. Warm iron if needed. Can be dry cleaned.

- FIT & FEATURES**
- Camel and Gray
  - Slightly oversized fit
  - V-neckline cardigan
  - Medium length, hits at the low hip
  - Hidden snap placket with grosgrain
  - Color blocked in diagonal lines in front and back
  - Brushed, medium weight sweater knit
- INSIDER INFO**
- Warm and cool colors
- CLIFFSNOTES**
- This is our midi sweater
  - Am I too cute? (Tilt head!)

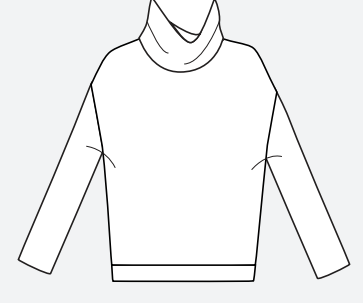
3892  
Travel Cardigan<sup>1</sup>  
SIZE: XXS-XL  
PRICE: USA 119 | CAN 149 | UK 94



**INVENTORY SIZE: M**  
**CONTENT:** 57% Cotton, 25% Acrylic, 17% Polyester, 1% other fibers  
**CARE:** Turn garment inside out and place in a mesh bag. Machine wash separately in cold water on the delicate cycle. Only non-chlorine bleach if needed. Do not twist or wring. Lay flat to dry. Warm iron if needed. Can be dry cleaned.

- FIT & FEATURES**
- Sage Blend
  - Oversized shape
  - Dropped armholes
  - Shawl collar
  - Hits at the hips
  - Chunky, heavy, and lightly brushed sweater knit
- INSIDER INFO**
- Boxy shape that collapses into the body
- CLIFFSNOTES**
- Perfect no matter where your day takes you
  - A cozy wrap for traveling down the frozen foods aisle

3885  
Tryst Pullover  
SIZE: XS-XL  
PRICE: USA 119 | CAN 149 | UK 94



**INVENTORY SIZE: S**  
**CONTENT:** 55% Cotton, 33% Acrylic, 10% Polyester, 1% Spandex, 1% other fibers  
**CARE:** Turn garment inside out and place in a mesh bag. Machine wash separately in cold water on the delicate cycle. Only non-chlorine bleach if needed. Do not twist or wring. Lay flat to dry. Warm iron if needed. Can be dry cleaned.

- FIT & FEATURES**
- Teal Shadow
  - Relaxed fit
  - Dropped armholes
  - Variegated rib pattern
  - Turtleneck
  - Hits at the hips
  - Open V-shaped cutout in back
  - Brushed, heavy sweater knit
- INSIDER INFO**
- Cutout in the back can show a peek of skin or layer underneath
- CLIFFSNOTES**
- Your new favorite sweater...we'll keep your secret
  - Pull it on and never pull it off

SWEATERS	WOVEN TOPS		
<p><b>3889</b>  <b>Tuck Turtleneck</b>            SIZE: XS-XL            PRICE: USA 109   CAN 139   UK 84</p>  <p><b>INVENTORY SIZE: L</b>            CONTENT: 61% Cotton, 38% Acrylic, 1% other fibers  <b>CARE:</b> Turn garment inside out and place in a mesh bag. Machine wash separately in cold water on the delicate cycle. Only non-chlorine bleach if needed. Do not twist or wring. Lay flat to dry. Warm iron if needed. Can be dry cleaned.</p> <hr/> <p><b>FIT &amp; FEATURES</b></p> <ul style="list-style-type: none"> <li>• Pearl</li> <li>• Sits close to body</li> <li>• Turtleneck</li> <li>• Tucks at front and back shoulders</li> <li>• Hits at the mid hip</li> <li>• Cashmere-like, medium weight brushed sweater knit</li> </ul> <p><b>INSIDER INFO</b></p> <ul style="list-style-type: none"> <li>• The perfect length</li> </ul> <p><b>CLIFFSNOTES</b></p> <ul style="list-style-type: none"> <li>• Tuck about a cute turtleneck</li> <li>• Kick it all the way back to the old-school '80s</li> </ul> <hr/> <hr/> <hr/> <hr/> <hr/> <hr/>	<p><b>3961</b>  <b>Aberdeen Shirt<sup>1</sup></b>            SIZE: XXS-XL            PRICE: USA 119   CAN 149   UK 94</p>  <p><b>INVENTORY SIZE: S</b>            CONTENT: 100% Rayon  <b>CARE:</b> Wash by hand separately with cold water. Only non-chlorine bleach if needed. Do not twist or wring. Lay flat to dry. Steam press back to shape. Can be dry cleaned.</p> <hr/> <p><b>FIT &amp; FEATURES</b></p> <ul style="list-style-type: none"> <li>• Regiment Check</li> <li>• Easy fit</li> <li>• Buttons through with ruffle edge</li> <li>• Raglan sleeves with elastic at cuffs</li> <li>• Hits at the mid hip</li> <li>• Rayon</li> </ul> <p><b>INSIDER INFO</b></p> <ul style="list-style-type: none"> <li>• Modified buffalo check shirt</li> <li>• Ruffle details</li> </ul> <p><b>CLIFFSNOTES</b></p> <ul style="list-style-type: none"> <li>• Check the box on this one</li> <li>• Femmed up for fall</li> </ul> <hr/> <hr/> <hr/> <hr/> <hr/> <hr/>	<p><b>X</b> <b>3947</b>  <b>Belfry Blouse<sup>1</sup></b>            SIZE: XS-XL            PRICE: USA 89   CAN 109   UK 69</p>  <p><b>INVENTORY SIZE: S</b>            CONTENT: 100% Polyester  <b>CARE:</b> Machine wash with like colors in cold water on the delicate cycle. Only non-chlorine bleach if needed. Lay flat to dry. Warm iron if needed.</p> <hr/> <p><b>FIT &amp; FEATURES</b></p> <ul style="list-style-type: none"> <li>• Bell Floral</li> <li>• Classic fit</li> <li>• Pull-on shape</li> <li>• Henley placket with collar</li> <li>• Shirttail hem, poly crepe</li> </ul> <p><b>INSIDER INFO</b></p> <ul style="list-style-type: none"> <li>• Interesting because of the bright ground with neutral florals on top</li> </ul> <p><b>CLIFFSNOTES</b></p> <ul style="list-style-type: none"> <li>• You'll be the belle of the ball</li> <li>• Goes with every topper!</li> </ul> <hr/> <hr/> <hr/> <hr/> <hr/> <hr/>	<p><b>3963</b>  <b>Birdwatcher Top</b>            SIZE: XS-XL            PRICE: USA 79   CAN 99   UK 62</p>  <p><b>INVENTORY SIZE: M</b>            CONTENT: 100% Polyester  <b>CARE:</b> Machine wash with like colors in cold water on the delicate cycle. Only non-chlorine bleach if needed. Tumble dry low, remove promptly. Warm iron if needed.</p> <hr/> <p><b>FIT &amp; FEATURES</b></p> <ul style="list-style-type: none"> <li>• Swallowtail Floral</li> <li>• Birds and leaves printed on cream ground</li> <li>• Poly crepe</li> </ul> <p><b>INSIDER INFO</b></p> <ul style="list-style-type: none"> <li>• Same silhouette and fabric as the Fall '19 Zebra Top</li> </ul> <p><b>CLIFFSNOTES</b></p> <ul style="list-style-type: none"> <li>• People will be watching you</li> <li>• V-formation for victory wearing this beauty</li> </ul> <hr/> <hr/> <hr/> <hr/> <hr/> <hr/>

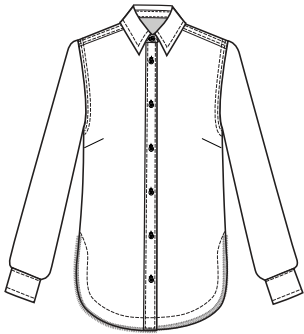


<div>3948</div> <div>Cake Ruffle Blouse</div> <div>SIZE: XS-XL</div> <div>PRICE: USA 99   CAN 119   UK 78</div> <div></div> <div><div>INVENTORY SIZE: M</div><div>CONTENT: 100% Polyester</div><div>CARE: Machine wash with like colors in cold water on the delicate cycle. Only non-chlorine bleach if needed. Lay flat to dry. Warm iron if needed.</div></div> <div><div>FIT &amp; FEATURES</div><div><ul style="list-style-type: none"><li>• Coquette Plaid</li><li>• Slim fit</li><li>• Pleated band collar</li><li>• Removable self-neck tie</li><li>• Pleated cuffs and sleeve plackets</li><li>• Shirttail hem</li><li>• Poly chiffon</li></ul></div><div><div>INSIDER INFO</div><div><ul style="list-style-type: none"><li>• This sophisticated jewel tone blouse looks fantastic dressed up, but try it with a distressed jean</li></ul></div><div><div>CLIFFSNOTES</div><div><ul style="list-style-type: none"><li>• Have your cake and wear it, too</li><li>• Every cake needs a topper—take the tie off</li></ul></div></div></div></div>	<div>3957</div> <div>Cheerful Blouse<sup>1</sup></div> <div>SIZE: XS-XL</div> <div>PRICE: USA 89   CAN 109   UK 69</div> <div><div>♥ heart of cabi item</div><div></div><div><div>INVENTORY SIZE: L</div><div>CONTENT: Self: 100% Polyester Contrast: 96% Rayon, 4% Spandex</div><div>CARE: Machine wash with like colors in cold water on the delicate cycle. Only non-chlorine bleach if needed. Lay flat to dry. Warm iron if needed.</div></div><div><div>FIT &amp; FEATURES</div><div><ul style="list-style-type: none"><li>• Playground Floral</li><li>• Easy fit</li><li>• V-neckline</li><li>• Buttons through front</li><li>• Striped knit cuffs</li><li>• Hits at the mid hip</li><li>• Poly crepe</li></ul></div><div><div>INSIDER INFO</div><div><ul style="list-style-type: none"><li>• Heart of cabi piece</li><li>• All-over floral with sporty, striped knit cuffs</li></ul></div><div><div>CLIFFSNOTES</div><div><ul style="list-style-type: none"><li>• Bring cheer to students in Rwanda</li><li>• Shake your sporty cuffs</li></ul></div></div></div></div></div>	<div>3958</div> <div>Devoted Blouse</div> <div>SIZE: XS-XL</div> <div>PRICE: USA 89   CAN 109   UK 69</div> <div></div> <div><div>INVENTORY SIZE: L</div><div>CONTENT: 100% Polyester</div><div>CARE: Machine wash with like colors in cold water on the delicate cycle. Only non-chlorine bleach if needed. Tumble dry low, remove promptly. Warm iron if needed.</div></div> <div><div>FIT &amp; FEATURES</div><div><ul style="list-style-type: none"><li>• Hearts Queue</li><li>• Slim fit</li><li>• Shorter length, hits at the hips</li><li>• V-neckline</li><li>• Three-quarter sleeves with elastic ruching</li><li>• Poly crepe</li></ul></div><div><div>INSIDER INFO</div><div><ul style="list-style-type: none"><li>• Think of this delicate black-and-white heart print blouse as the perfect blouse taken up a notch. It goes with nearly everything.</li></ul></div><div><div>CLIFFSNOTES</div><div><ul style="list-style-type: none"><li>• Hopelessly devoted to serving you</li><li>• Sprinkled with love</li></ul></div></div></div></div>	<div>3953</div> <div>Harmony Blouse<sup>1</sup></div> <div>SIZE: XS-XL</div> <div>PRICE: USA 99   CAN 119   UK 78</div> <div></div> <div><div>INVENTORY SIZE: S</div><div>CONTENT: Self: 100% Polyester Contrast: 100% Polyester</div><div>CARE: Machine wash with like colors in cold water on the delicate cycle. Only non-chlorine bleach if needed. Lay flat to dry. Warm iron if needed.</div></div> <div><div>FIT &amp; FEATURES</div><div><ul style="list-style-type: none"><li>• Flower Riot</li><li>• Peasant style, easy-fitting blouse</li><li>• Banded neckline with V-front and self-tie</li><li>• Piping at the shoulder yoke</li><li>• Ruffle down sleeves</li><li>• Elastic cuffs</li><li>• Hits at the mid hip</li><li>• Poly chiffon</li></ul></div><div><div>INSIDER INFO</div><div><ul style="list-style-type: none"><li>• In harmony with so many items in the Collection</li></ul></div><div><div>CLIFFSNOTES</div><div><ul style="list-style-type: none"><li>• These prints are harmonizing</li><li>• Flower riot is sheer perfection</li></ul></div></div></div></div>
---	--	--	---

WOVEN TOPS

3946  
Highland Shirt¹

SIZE: XS-XL  
PRICE: USA 119 | CAN 149 | UK 94



**INVENTORY SIZE: M**  
**CONTENT:** 98% Cotton, 2% Polyester  
**CARE:** Turn garment inside out and place in a mesh bag. Machine wash separately in cold water on the delicate cycle. Only non-chlorine bleach if needed. Do not twist or wring. Lay flat to dry. Warm iron if needed. Can be dry cleaned.

**FIT & FEATURES**

- Eminence Plaid
- Straight, easy fit
- Longer length provides great coverage
- Shirttail raw hem
- Double-faced, heavy cotton with gray and black check inside

**INSIDER INFO**

- Fringe hem can be untangled by lightly combing with fingers

**CLIFFSNOTES**

- It's the "shacket"—shirt/jacket
- Fringe-worthy fierceness

3952  
Knife Pleat Blouse¹

SIZE: XXS-XL  
PRICE: USA 119 | CAN 149 | UK 94



**INVENTORY SIZE: M**  
**CONTENT:** 100% Polyester  
**CARE:** Turn garment inside out and place in a mesh bag. Machine wash separately in cold water on the delicate cycle. Only non-chlorine bleach if needed. Do not twist or wring. Lay flat to dry. Steam iron only if needed. Do not press with flat iron. Can be dry cleaned.

**FIT & FEATURES**

- Bloom Print
- Permanent pleats throughout
- Loose and flowy
- High smocked collar
- Neck placket with self-covered buttons
- Smocked cuffs
- Hits at the mid hip
- Poly chiffon

**INSIDER INFO**

- Similar silhouette as the Spring '18 Embroidered Blouse
- CLIFFSNOTES**
- You'll be killing it in this!
- Get a slice of a *Fairytale Ending*



3944  
Rebel Shirt¹

SIZE: XS-XL  
PRICE: USA 129 | CAN 159 | UK 99



**INVENTORY SIZE: M**  
**CONTENT:** 43% Modal, 25% Lyocell, 19% Cotton, 13% Polyester  
**CARE:** Machine wash separately, inside out, in cold water on the delicate cycle. Do not bleach. Tumble dry low, remove promptly. Warm iron if needed.

**FIT & FEATURES**

- Fade Wash
- Slim fit
- Classic denim shirt
- Shoulder yokes
- Patch pockets with flaps
- Lightweight, super soft, and stretchy cotton blend

**INSIDER INFO**

- Micro fiber denim
- CLIFFSNOTES**
- Sisterhood of the Traveling Shirts
- Styling opps galore

3964  
Replay Top¹

SIZE: XS-XL  
PRICE: USA 79 | CAN 99 | UK 62



**INVENTORY SIZE: M**  
**CONTENT:** 100% Polyester  
**CARE:** Machine wash with like colors in cold water on the delicate cycle. Only non-chlorine bleach if needed. Tumble dry low, remove promptly. Warm iron if needed.

**FIT & FEATURES**

- Black
- Collar on V-neckline with placket
- Cuffed cap sleeves
- Easy fit
- Hits at the low hip
- Poly crepe

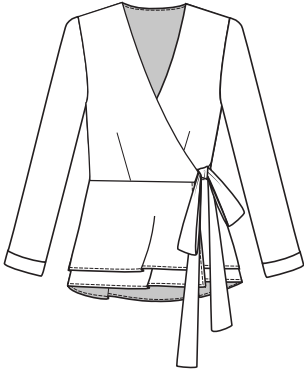
**INSIDER INFO**

- The easy fit of this blouse works on all shapes and sizes

**CLIFFSNOTES**

- You'll wear it over and over and over...
- The basic that amps up your closet

3951  
Ringleader Wrap Top<sup>4</sup>  
SIZE: XS-XXL  
PRICE: USA 99 | CAN 119 | UK 78



**INVENTORY SIZE: M**  
CONTENT: Self: 94% Nylon,  
6% Spandex  
Lining: 94% Nylon, 6% Spandex  
**CARE:** Turn garment inside out and  
place in a mesh bag. Machine wash  
separately in cold water on the  
delicate cycle. Only non-chlorine  
bleach if needed. Do not twist or  
wring. Lay flat to dry. Warm iron if  
needed. Can be dry cleaned.

- FIT & FEATURES**
- Signet Print
  - Fitted true wrap top
  - 2 layers on body, one on sleeves
  - Super soft mesh knit
- INSIDER INFO**
- Top version of the Spring '20  
Siren Wrap Dress
  - Self-tie at the waist
- CLIFFSNOTES**
- You're the ringleader of life
  - Wrap it up and I'll take it

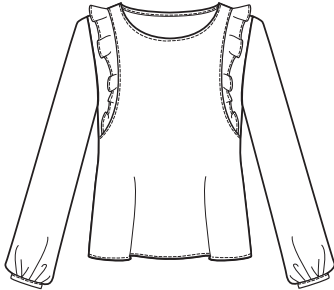
3954  
Sequel Blouse<sup>4</sup>  
SIZE: XS-XXL  
PRICE: USA 99 | CAN 119 | UK 78



**INVENTORY SIZE: M**  
CONTENT: 100% Polyester  
**CARE:** Machine wash with like  
colors in cold water on the delicate  
cycle. Only non-chlorine bleach if  
needed. Lay flat to dry. Warm iron if  
needed.

- FIT & FEATURES**
- Bold Floral
  - Easy fit
  - V-neckline
  - Smocking at elbows and cuffs to  
create poet-style sleeves
  - Hits at the mid hip
  - Poly crepe
- INSIDER INFO**
- Oversized floral pattern
- CLIFFSNOTES**
- The Spring '20 Bethany Blouse  
went retro
  - Florals gone wild

3956  
Sinatra Blouse<sup>4</sup>  
SIZE: XS-XXL  
PRICE: USA 79 | CAN 99 | UK 62



**INVENTORY SIZE: M**  
CONTENT: 100% Polyester  
**CARE:** Machine wash with like  
colors in cold water on the delicate  
cycle. Only non-chlorine bleach if  
needed. Lay flat to dry. Warm iron if  
needed.

- FIT & FEATURES**
- Baby Dot
  - Easy fit
  - Jewel neckline
  - Ruffle starts at shoulders and  
goes underneath arms
  - Hits at the high hip
  - Poly chiffon
- INSIDER INFO**
- Polka dot with flutter details
- CLIFFSNOTES**
- They'll be swooning for your  
outfit
  - You wear it your way

3959  
Timeless Blouse<sup>1</sup>  
SIZE: XS-XL  
PRICE: USA 89 | CAN 109 | UK 69



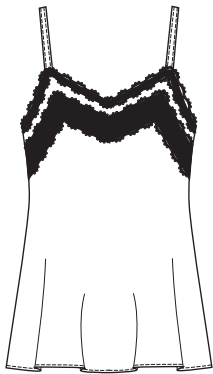
**INVENTORY SIZE: M**  
CONTENT: Self: 100% Polyester  
Contrast: 64% Rayon, 33% Cotton,  
3% Spandex  
**CARE:** Machine wash separately,  
inside out, in cold water on the  
delicate cycle. Only non-chlorine  
bleach if needed. Lay flat to dry.  
Cool iron on the reverse side if  
needed. Can be dry cleaned.

- FIT & FEATURES**
- Classic Navy
  - Slim fit
  - V-neckline
  - Pleated at shoulder sleeves
  - Rib knit trim at inside cuffs
  - Hits at the mid hip
  - Polyester (parachute poly)
- INSIDER INFO**
- Classic blouse shape, but so  
much more than a basic
  - The Fall '19 Snake Charmer  
Blouse and Classic Blouse  
merged into one
- CLIFFSNOTES**
- Time after time
  - Time is on your side

SLEEVELESS WOVEN TOPS

3976  
All-Purpose Cami

SIZE: XS-XL  
PRICE: USA 79 | CAN 99 | UK 62



**INVENTORY SIZE: S**  
**CONTENT:** 100% Polyester, exclusive of decoration  
**CARE:** Machine wash separately, inside out, in cold water on the delicate cycle. Only non-chlorine bleach if needed. Lay flat to dry. Cool iron on the reverse side if needed. Can be dry cleaned.

**FIT & FEATURES**

- Mulberry
- Pairs back to the Square Neck Pullover

**INSIDER INFO**

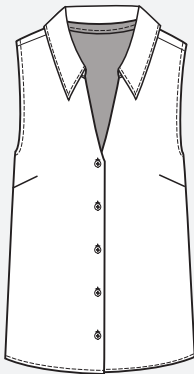
- Same style and fabric as the Spring '20 All-Purpose Cami
- Pairs back to so much in the Fall 2020 Collection

**CLIFFSNOTES**

- Don't just keep it covered up
- You don't have to tell me all her purposes

3982  
Blossom Blouse

SIZE: XS-XL  
PRICE: USA 79 | CAN 99 | UK 62



**INVENTORY SIZE: S**  
**CONTENT:** 100% Polyester  
**CARE:** Machine wash with like colors in cold water on the delicate cycle. Only non-chlorine bleach if needed. Lay flat to dry. Warm iron if needed.

**FIT & FEATURES**

- Daisy Print
- Easy fit
- Collar with band to V-neckline
- Slight shirttail hem
- Sleeveless, hits at the mid hip
- Poly crepe

**INSIDER INFO**

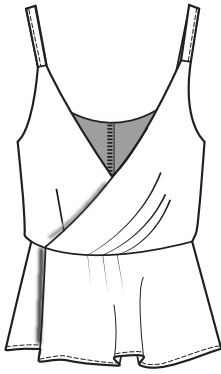
- Happy, micro flower print

**CLIFFSNOTES**

- Transition piece to bloom from spring to fall
- Print mixing you can't mess up

3986  
Check Crossover Cami<sup>1</sup>

SIZE: 0-16  
PRICE: USA 89 | CAN 109 | UK 69



**INVENTORY SIZE: 8**  
**CONTENT:** Self: 100% Polyester  
Lining: 100% Polyester  
**CARE:** Machine wash with like colors in cold water on the delicate cycle. Only non-chlorine bleach if needed. Lay flat to dry. Warm iron if needed.

**FIT & FEATURES**

- Checkerboard
- Same style and fabric as the Fall '19 Crossover Cami
- Fitted garment
- Zip closure

**INSIDER INFO**

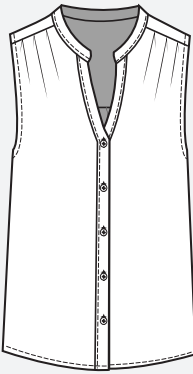
- The fall season is all about checks, and this subtle, two-tone plaid makes it easy to pair with bold colors or neutrals

**CLIFFSNOTES**

- She's back! Timeless, seasonless
- Check! It's in my Favorites.

3988  
Dotty Top<sup>1</sup>

SIZE: XS-XL  
PRICE: USA 79 | CAN 99 | UK 62



**INVENTORY SIZE: L**  
**CONTENT:** 100% Polyester  
**CARE:** Machine wash with like colors in cold water on the delicate cycle. Only non-chlorine bleach if needed. Lay flat to dry. Warm iron if needed.

**FIT & FEATURES**

- Baby Dot
- Easy fit
- Banded collar to the V-neckline
- Covered buttons
- Yoke detail

**INSIDER INFO**

- Sleeveless
- Shirttail hem
- Hits at the mid hip
- Poly crepe

**INSIDER INFO**

- Navy pin dots
- Easily pairs with black

**CLIFFSNOTES**

- Prints you'll need a microscope to see
- For the print cautious

3984  
Ever Top<sup>1</sup>  
SIZE: XS-XL  
PRICE: USA 84 | CAN 104 | UK 66



INVENTORY SIZE: M  
CONTENT: Self: 100% Polyester  
Lining: 100% Polyester  
CARE: Machine wash with like colors in cold water on the delicate cycle. Only non-chlorine bleach if needed. Lay flat to dry. Warm iron if needed.

FIT & FEATURES

- Navy Bouquet
- Easy fit
- Sleeveless halter top
- Ruffle at neckline
- Double-layer chiffon

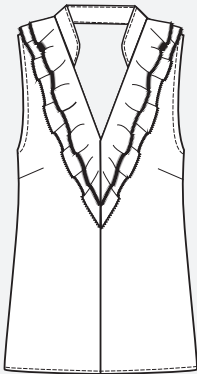
INSIDER INFO

- Ethereal ruffle in dark whimsy

CLIFFSNOTES

- Ever so cute
- Happily ever after

3979  
Portrait Blouse<sup>1</sup>  
SIZE: XS-XXL  
PRICE: USA 79 | CAN 99 | UK 62



INVENTORY SIZE: M  
CONTENT: Self: 100% Polyester  
Contrast: 100% Polyester  
CARE: Machine wash with like colors in cold water on the delicate cycle. Only non-chlorine bleach if needed. Lay flat to dry. Warm iron if needed.

FIT & FEATURES

- White
- Slim fit
- Sleeveless
- Banded collar to V-neckline
- Double-layer poly chiffon ruffle
- Opaque poly crepe body
- Hits at the high hip

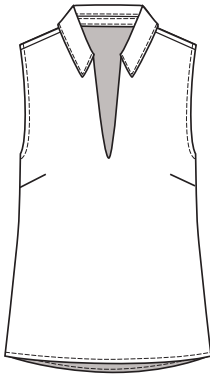
INSIDER INFO

- Very feminine with ruffle details
- Perfect to go under every jacket you own

CLIFFSNOTES

- Picture-perfect
- Face-framing selfie

X 3989  
Seismic Top<sup>1, 4</sup>  
SIZE: XS-XXL  
PRICE: USA 79 | CAN 99 | UK 62



INVENTORY SIZE: M  
CONTENT: 100% Polyester  
CARE: Machine wash with like colors in cold water on the delicate cycle. Only non-chlorine bleach if needed. Tumble dry low, remove promptly. Warm iron if needed.

FIT & FEATURES

- Avalanche Print
- Bold rock shapes
- Collar to V-neckline
- Slight peplum in the back
- Sleeveless
- Easy fit
- Hits at the high hip
- Poly crepe

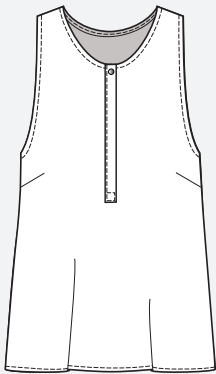
INSIDER INFO

- Bold print, yet feminine

CLIFFSNOTES

- Create a seismic shift in your closet
- You'll be falling for this print

X 3985  
Snap Top<sup>1</sup>  
SIZE: XS-XL  
PRICE: USA 79 | CAN 99 | UK 62



INVENTORY SIZE: S  
CONTENT: 100% Polyester  
CARE: Machine wash with like colors in cold water on the delicate cycle. Only non-chlorine bleach if needed. Lay flat to dry. Warm iron if needed.

FIT & FEATURES

- Flower Tile
- Easy fit
- Crew neckline
- Micro snap at neckline
- Hidden placket with buttons
- Does not button all the way through
- Sleeveless tank style
- Hits at the hips
- Poly crepe

INSIDER INFO

- Title mosaic print with red and orange center
- Snap and enamel buttons

CLIFFSNOTES

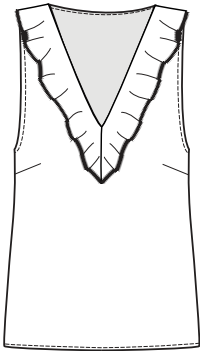
- Get dressed in a snap
- Nostalgic retro print

SLEEVELESS WOVEN TOPS

KNIT TOPS

3983  
Stellar Top¹

SIZE: XS-XL  
PRICE: USA 79 | CAN 99 | UK 62



**INVENTORY SIZE: M**  
**CONTENT:** 100% Polyester  
**CARE:** Machine wash with like colors in cold water on the delicate cycle. Only non-chlorine bleach if needed. Lay flat to dry. Warm iron if needed.

**FIT & FEATURES**

- Micro Stars
- Slim fit
- Merrow edge ruffle around the neckline
- V-neckline in front
- Sleeveless
- Slightly cropped, hits just below the waist
- Poly crepe

**INSIDER INFO**

- Pair with your higher-rise bottoms

**CLIFFSNOTES**

- Star power for days
- Your star on the Walk of Fame

3978  
Surround Top¹

SIZE: XS-XL  
PRICE: USA 79 | CAN 99 | UK 62



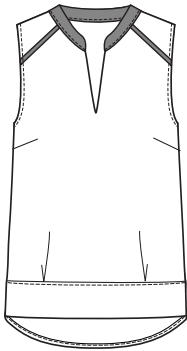
**INVENTORY SIZE: L**  
**CONTENT:** Self: 100% Polyester  
Cowl Neck: 100% Polyester  
**CARE:** Machine wash with like colors in cold water on the delicate cycle. Only non-chlorine bleach if needed. Lay flat to dry. Warm iron if needed.

**FIT & FEATURES**

- Plum
  - Slim fit
  - Opaque body in poly crepe
  - Poly chiffon, drapey cowl
  - Hits at high hip
  - Sleeveless
- INSIDER INFO**
- Beautiful face-framing piece
- CLIFFSNOTES**
- Surround yourself with all good things
  - Like surround sound, but better

3981  
Wild Flower Top¹

SIZE: XS-XL  
PRICE: USA 79 | CAN 99 | UK 62



**INVENTORY SIZE: M**  
**CONTENT:** 100% Polyester  
**CARE:** Machine wash with like colors in cold water on the delicate cycle. Only non-chlorine bleach if needed. Tumble dry low, remove promptly. Warm iron if needed.

**FIT & FEATURES**

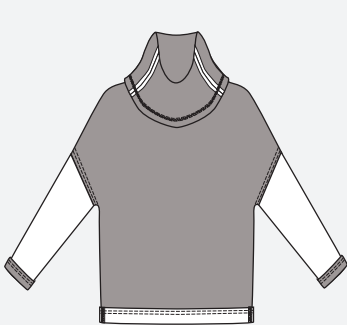
- Floating Floral
  - Easy fit
  - Banded collar to V-neckline
  - Band at front hem
  - Shirttail hem in back
  - Sleeveless
  - Hits at the mid hip
  - Poly crepe
- INSIDER INFO**
- This bold statement print is grounded in olive green, which adds a neutral element to this playful floral

**CLIFFSNOTES**

- Go wild with all these fall colors
- cabi Tap will explode with recommendations

3996  
ATC Cowl

SIZE: XXS-XL  
PRICE: USA 109 | CAN 139 | UK 84



**INVENTORY SIZE: S**  
**CONTENT:** 80% Rayon, 13% Cotton, 7% Spandex  
**CARE:** Machine wash separately, inside out, in cold water on the delicate cycle. Only non-chlorine bleach if needed. Lay flat to dry. Cool iron on the reverse side if needed. Can be dry cleaned.

**FIT & FEATURES**

- Heather Gray
  - Drop shoulders
  - Cowl neckline
  - Outside seaming details
  - Open cross detail from back yoke
  - Boxy fit
  - Hits at the high hip
  - Rayon-knit blend
- INSIDER INFO**
- This is the softest piece ever! You'll want to curl up with it non-stop
- CLIFFSNOTES**
- All The Coziness (ATC)
  - Walk away "wow"

4007  
ATC Cross Back Sweatshirt  
SIZE: XS-XL  
PRICE: USA 94 | CAN 114 | UK 72



**INVENTORY SIZE: M**  
CONTENT: 96% Rayon, 4% Spandex  
CARE: Wash by hand separately with cold water. Only non-chlorine bleach if needed. Do not twist or wring. Lay flat to dry. Steam iron only if needed. Can be machine washed in a mesh bag in cold water on the delicate cycle.

**FIT & FEATURES**

- Charcoal
- Easy fit
- Scoop neckline in front to wide V-neckline in back
- Crisscross elastic detail in back
- Long sleeves with cuffs
- Shirttail hem
- Hits at the low hip
- French Terry

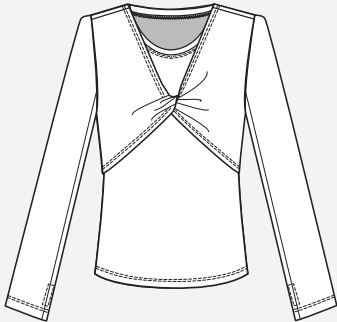
**INSIDER INFO**

- This seemingly simple sweatshirt skims the body and has an unexpected peek-a-boo back

**CLIFFSNOTES**

- All The Cool (ATC)
- The only time it's okay to "double cross" someone

3997  
ATC Layered Tee  
SIZE: XS-XXL  
PRICE: USA 109 | CAN 139 | UK 84



**INVENTORY SIZE: M**  
CONTENT: Self: 96% Rayon, 4% Spandex  
Sleeveless Tank: 96% Rayon, 4% Spandex  
CARE: Wash by hand separately with cold water. Only non-chlorine bleach if needed. Do not twist or wring. Lay flat to dry. Steam iron only if needed. Can be machine washed in a mesh bag in cold water on the delicate cycle.

**FIT & FEATURES**

- Black
- Two piece
- Under tank has an easy fit
- Crew neckline
- Hits at the high hip
- Outer piece is like an updated arm warmer
- Crisscross front twist
- Long sleeves
- French Terry

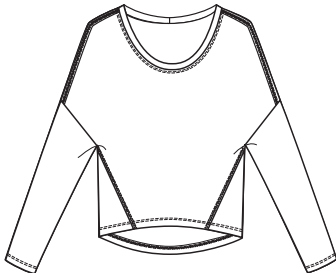
**INSIDER INFO**

- Muscle tee underneath
- Top piece has a feminine twist in the front
- Wear the top piece over anything to nip you in

**CLIFFSNOTES**

- All The Coverage (ATC)
- OTD—Over The Dress

X 4005  
Crosswalk Tee  
SIZE: XXS-XL  
PRICE: USA 89 | CAN 109 | UK 69



**INVENTORY SIZE: S**  
CONTENT: 98% Rayon, 2% Spandex  
CARE: Wash by hand separately with cold water. Only non-chlorine bleach if needed. Do not twist or wring. Lay flat to dry. Steam iron only if needed. Can be machine washed in a mesh bag in cold water on the delicate cycle.

**FIT & FEATURES**

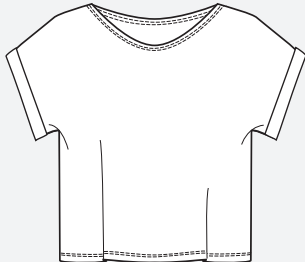
- Black and White Stripe
- Low crew neckline
- Long sleeves
- Loose, easy fit
- Hits at the hips
- Drop shoulders
- Baby rib

**INSIDER INFO**

**CLIFFSNOTES**

- Run, don't walk away with this one
- You'll stop traffic

X 4008  
Groove Tee  
SIZE: XS-XL  
PRICE: USA 76 | CAN 96 | UK 59



**INVENTORY SIZE: S**  
CONTENT: 98% Rayon, 2% Spandex  
CARE: Wash by hand separately with cold water. Only non-chlorine bleach if needed. Do not twist or wring. Lay flat to dry. Steam iron only if needed. Can be machine washed in a mesh bag in cold water on the delicate cycle.

**FIT & FEATURES**

- Teal Stripe
- Boxy, cropped fit
- Short cap sleeves
- Scoop neckline
- Baby rib

**INSIDER INFO**

- Looks great with our high rise bottoms

**CLIFFSNOTES**

- Shake your groove thang
- Get in the groove as we attack the rack



KNIT TOPS

<div>3995</div> <div>Playoff Hoodie<sup>1</sup></div> <div>SIZE: XXS-XL</div> <div>PRICE: USA 109   CAN 139   UK 84</div> <div></div> <div><div>INVENTORY SIZE: S</div><div>CONTENT: Self: 94% Rayon, 6% Spandex</div><div>Contrast: 98% Rayon, 2% Spandex</div><div>CARE: Wash by hand separately with cold water. Only non-chlorine bleach if needed. Do not twist or wring. Lay flat to dry. Steam iron only if needed. Can be machine washed in a mesh bag in cold water on the delicate cycle.</div></div> <div><div>FIT &amp; FEATURES</div><div><ul style="list-style-type: none"><li>• Olive Stripe</li><li>• Long raglan sleeves</li><li>• V-neckline to hoodie</li><li>• Loose, easy fit</li><li>• Low hip length</li><li>• Baby rib knit</li></ul></div><div>INSIDER INFO</div><div><ul style="list-style-type: none"><li>• Two-stripe pattern</li><li>• Perfect pairing with the olive Pivot Jogger</li></ul></div><div>CLIFFSNOTES</div><div><ul style="list-style-type: none"><li>• Whether or not your team takes the field, you'll be the #1 fan in this piece!</li><li>• We all made the team in this one</li></ul></div></div>	<div>3998</div> <div>Serenity Tee<sup>1</sup></div> <div>SIZE: XXS-XL</div> <div>PRICE: USA 84   CAN 104   UK 66</div> <div></div> <div><div>INVENTORY SIZE: M</div><div>CONTENT: 97% Rayon, 3% Spandex</div><div>CARE: Wash by hand separately with cold water. Only non-chlorine bleach if needed. Do not twist or wring. Lay flat to dry. Steam iron only if needed. Can be machine washed in a mesh bag in cold water on the delicate cycle.</div></div> <div><div>FIT &amp; FEATURES</div><div><ul style="list-style-type: none"><li>• Plum Stripe</li><li>• Same style and fabric as the Spring '20 Serenity Tee</li></ul></div><div>INSIDER INFO</div><div><ul style="list-style-type: none"><li>• This is the most beloved tee in cabi history! We keep offering it season after season because clients can't get enough.</li></ul></div><div>CLIFFSNOTES</div><div><ul style="list-style-type: none"><li>• We should pre-load it to everyone's Favorites</li><li>• Just, duh!</li></ul></div></div>	<div>4003</div> <div>Simple Tee</div> <div>SIZE: XS-XL</div> <div>PRICE: USA 84   CAN 104   UK 66</div> <div></div> <div><div>INVENTORY SIZE: M</div><div>CONTENT: 95% Rayon, 4% Spandex, 1% other fibers</div><div>CARE: Wash by hand separately with cold water. Only non-chlorine bleach if needed. Do not twist or wring. Lay flat to dry. Steam iron only if needed. Can be machine washed in a mesh bag in cold water on the delicate cycle.</div></div> <div><div>FIT &amp; FEATURES</div><div><ul style="list-style-type: none"><li>• Oatmeal</li><li>• New rib fabrication</li><li>• Crew to V-neckline shape</li><li>• Long sleeves</li><li>• Hits at the hips</li><li>• Rayon/spandex knit</li></ul></div><div>INSIDER INFO</div><div><ul style="list-style-type: none"><li>• Confetti heather yarn</li></ul></div><div>CLIFFSNOTES</div><div><ul style="list-style-type: none"><li>• Think Spring '19 Notch Tee, but with sleeves</li><li>• Simple sugar adds energy to every outfit</li></ul></div></div>	<div>4006</div> <div>Turtleneck Tee</div> <div>SIZE: XS-XL</div> <div>PRICE: USA 84   CAN 104   UK 66</div> <div></div> <div><div>INVENTORY SIZE: M</div><div>CONTENT: 96% Rayon, 4% Spandex</div><div>CARE: Wash by hand separately with cold water. Only non-chlorine bleach if needed. Do not twist or wring. Lay flat to dry. Steam iron only if needed. Can be machine washed in a mesh bag in cold water on the delicate cycle.</div></div> <div><div>FIT &amp; FEATURES</div><div><ul style="list-style-type: none"><li>• Black</li><li>• New rib fabrication</li><li>• Slim fit</li><li>• Loose turtleneck, not too tight around the neck</li><li>• Long sleeves</li><li>• Hits at the mid hip</li><li>• Rayon/spandex knit</li></ul></div><div>INSIDER INFO</div><div><ul style="list-style-type: none"><li>• Perfect length and layering piece</li></ul></div><div>CLIFFSNOTES</div><div><ul style="list-style-type: none"><li>• I call it the Timeless Turtleneck</li><li>• With a neck to flatter you, not choke you</li></ul></div></div>
--	---	--	---



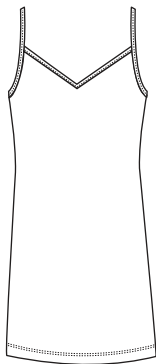
SLEEVELESS KNIT TOPS

<p><b>4010</b> <b>Liner Tank</b> SIZE: XS-XL PRICE: USA 76   CAN 96   UK 59</p> 	<p><b>4011</b> <b>Under Over Tank</b> SIZE: XS-XL PRICE: USA 69   CAN 89   UK 54</p> 	<p><b>5067</b> <b>V-Neck Cami³</b> SIZE: XS-XL PRICE: USA 36   CAN 46   UK 28</p> 	<p><b>5067</b> <b>V-Neck Cami²</b> SIZE: XS-XL PRICE: USA 36   CAN 46   UK 28</p> 
<p><b>INVENTORY SIZE: M</b> CONTENT: 95% Rayon, 5% Spandex CARE: Wash by hand separately with cold water. Only non-chlorine bleach if needed. Do not twist or wring. Lay flat to dry. Steam iron only if needed. Can be machine washed in a mesh bag in cold water on the delicate cycle.</p>	<p><b>INVENTORY SIZE: M</b> CONTENT: Self: 70% Rayon, 26% Nylon, 4% Spandex Lining: 60% Rayon, 35% Nylon, 5% Spandex CARE: Machine wash with like colors in cold water on the delicate cycle. Only non-chlorine bleach if needed. Lay flat to dry. Steam iron on the reverse side if needed.</p>	<p><b>INVENTORY SIZE: M</b> CONTENT: 96% Cotton, 4% Spandex CARE: Machine wash separately, inside out, in cold water on the delicate cycle. Do not bleach. Tumble dry low, remove promptly. Warm iron if needed.</p>	<p><b>INVENTORY SIZE: S</b> CONTENT: 96% Cotton, 4% Spandex CARE: Machine wash separately, inside out, in cold water on the delicate cycle. Do not bleach. Tumble dry low, remove promptly. Warm iron if needed.</p>
<p><b>FIT &amp; FEATURES</b></p> <ul style="list-style-type: none"><li>• Dijon Stripe</li><li>• New rib fabrication</li><li>• Slim fit</li><li>• Shirttail hem</li><li>• Hits at the mid hip</li><li>• Narrow straps</li><li>• Keyhole at center back neckline</li><li>• Rayon/spandex knit</li></ul> <p><b>INSIDER INFO</b></p> <ul style="list-style-type: none"><li>• Same fabric as the Fall '20 Turtleneck Tee and Simple Tee</li></ul> <p><b>CLIFFSNOTES</b></p> <ul style="list-style-type: none"><li>• Are you a floral or stripes girl?</li><li>• Sporty or spicy?</li></ul>	<p><b>FIT &amp; FEATURES</b></p> <ul style="list-style-type: none"><li>• Black</li><li>• Fitted to the body</li><li>• Slightly cropped</li><li>• Hits just below the waist</li><li>• Bustier seaming details</li><li>• V-notch detail</li><li>• Double-layer</li><li>• Sleek ponte lined in chance interlock fabric</li><li>• Rayon-blend knit</li></ul> <p><b>INSIDER INFO</b></p> <ul style="list-style-type: none"><li>• Pullover, no zipper</li><li>• Longer version of the Spring '18 Bralette</li><li>• Layer under sheer items or over anything to nip you in</li></ul> <p><b>CLIFFSNOTES</b></p> <ul style="list-style-type: none"><li>• I'll take the bet on all the ways to wear this one</li><li>• Under the blouse or over the girls</li></ul>	<p><b>FIT &amp; FEATURES</b></p> <ul style="list-style-type: none"><li>• Black</li><li>• Fits close to body, hits at the high hip</li><li>• V-neckline</li><li>• Adjustable straps</li><li>• T-shirt knit</li></ul> <p><b>INSIDER INFO</b></p> <ul style="list-style-type: none"><li>• Also available in buff, classic navy, and true white</li></ul>	<p><b>FIT &amp; FEATURES</b></p> <ul style="list-style-type: none"><li>• Buff</li><li>• Fits close to body, hits at the high hip</li><li>• V-neckline</li><li>• Adjustable straps</li><li>• T-shirt knit</li></ul> <p><b>INSIDER INFO</b></p> <ul style="list-style-type: none"><li>• Also available in black, classic navy, and true white</li></ul>

SLEEVELESS KNIT TOPS

5067  
V-Neck Cami<sup>3</sup>

SIZE: XS-XL  
PRICE: USA 36 | CAN 46 | UK 28



**INVENTORY SIZE: M**  
CONTENT: 96% Cotton, 4% Spandex  
CARE: Machine wash separately, inside out, in cold water on the delicate cycle. Do not bleach. Tumble dry low, remove promptly. Warm iron if needed.

**FIT & FEATURES**

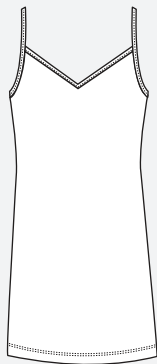
- Classic Navy
- Fits close to body, hits at the high hip
- V-neckline
- Adjustable straps
- T-shirt knit

**INSIDER INFO**

- Also available in black, buff, and true white

5067  
V-Neck Cami<sup>2</sup>

SIZE: XS-XL  
PRICE: USA 36 | CAN 46 | UK 28



**INVENTORY SIZE: L**  
CONTENT: 96% Cotton, 4% Spandex  
CARE: Machine wash separately, inside out, in cold water on the delicate cycle. Do not bleach. Tumble dry low, remove promptly. Warm iron if needed.

**FIT & FEATURES**

- True White
- Fits close to body, hits at the high hip
- V-neckline
- Adjustable straps
- T-shirt knit

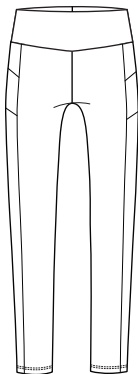
**INSIDER INFO**

- Also available in black, buff, and classic navy

LEGGINGS & TROUSERS

3931  
ATC Legging

SIZE: XS-XL  
INSEAM: 27 IN. | 68.5 CM.  
PRICE: USA 109 | CAN 139 | UK 84



**INVENTORY SIZE: S**  
CONTENT: 65% Rayon, 31% Nylon, 4% Spandex  
CARE: Machine wash with like colors in cold water on the delicate cycle. Only non-chlorine bleach if needed. Lay flat to dry. Steam iron on the reverse side if needed.

**FIT & FEATURES**

- Camo
- Same great fit as the Spring '20 Relax Cropped Legging, but full length
- Printed sleek ponte double knit
- Pockets on the side
- Seaming details

**INSIDER INFO**

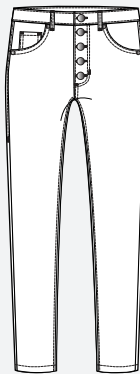
- The Design Team went through several iterations of the print to create the perfect feminine and cloud-like camo
- Matches the ATC Jacket

**CLIFFSNOTES**

- All The Comfort (ATC)
- Stand still and your kids will run right past you

3927  
Button Fly Skinny<sup>1</sup>

SIZE: 0-16  
INSEAM: 31 IN. | 79 CM.  
PRICE: USA 119 | CAN 149 | UK 94



**INVENTORY SIZE: 6**  
CONTENT: 99% Cotton, 1% Spandex  
CARE: Machine wash separately, inside out, in cold water on the delicate cycle. Do not bleach. Tumble dry low, remove promptly. Warm iron if needed.

**FIT & FEATURES**

- Caramel
- High rise
- Skinny fit
- Exposed button fly
- Super soft stretch corduroy

**INSIDER INFO**

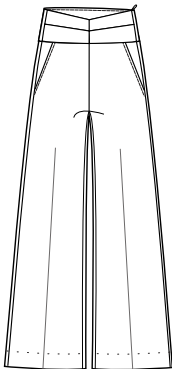
- Same fabrication as our much-loved Skinny Cords
- In a caramel color that matches everything
- Same fit as the Fall '20 Button Fly Skinny, but feels different on the body due to the cord fabrication

**CLIFFSNOTES**

- Foxy!
- The grad school of corduroy

3920  
Coco Trouser<sup>1</sup>

SIZE: 0-16  
INSEAM: R: 31 IN. | 79 CM.  
L: 34 IN. | 86.5 CM.  
PRICE: USA 129 | CAN 159 | UK 99



**INVENTORY SIZE:** 12R, 6L  
**CONTENT:** 70% Rayon, 26% Nylon, 4% Spandex  
**CARE:** Machine wash with like colors in cold water on the delicate cycle. Only non-chlorine bleach if needed. Lay flat to dry. Steam iron on the reverse side if needed.

**FIT & FEATURES**

- Classic Navy
- High rise trouser
- Wide waistband with V-chevron seaming in front
- Hidden side zip
- Slash pockets
- Slim fit at waistband through hips
- Comes in regular and long lengths
- Wide trouser leg
- Welt pockets in back
- Sleek ponte double knit

**INSIDER INFO**

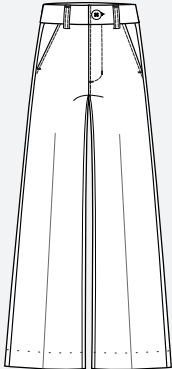
- Wide cummerbund-style waistband that holds you in
- Leg shape similar to the Fall '19 Bond Trouser
- Inspired by a vintage Chanel trouser found in Paris by Kat and Becky at one of their favorite designer resale shops, Pretty Box

**CLIFFSNOTES**

- Chanel is the standard of style
- Do my legs look too long?

3921  
Houndstooth Trouser

SIZE: 0-16  
INSEAM: R: 31 IN. | 79 CM.  
L: 34 IN. | 86.5 CM.  
PRICE: USA 129 | CAN 159 | UK 99



**INVENTORY SIZE:** 4R, 10L  
**CONTENT:** 60% Polyester, 39% Rayon, 1% Spandex  
**CARE:** Machine wash separately, inside out, in cold water on the delicate cycle. Only non-chlorine bleach if needed. Lay flat to dry. Cool iron on the reverse side if needed. Can be dry cleaned.

**FIT & FEATURES**

- Black and White
- Classic high-waisted trouser
- Front closure zipper and button
- Slash pockets
- Easy fit at waist and hips
- Comes in regular and long lengths
- Wide trouser leg
- Flap pockets
- Soft and substantial double knit

**INSIDER INFO**

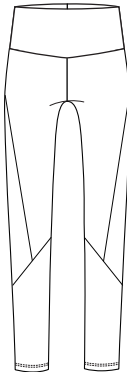
- Houndstooth print
- Similar feel and leg shape as the Fall '19 Bond Trouser

**CLIFFSNOTES**

- We're taking man's best friend literally here
- Corporate, classic appeal with a WFH comfy feel

3932  
Lanky Legging<sup>1</sup>

SIZE: XS-XL  
INSEAM: 27 IN. | 68.5 CM.  
PRICE: USA 99 | CAN 119 | UK 78



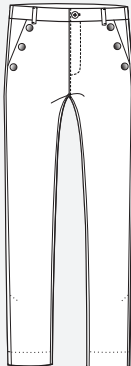
**INVENTORY SIZE:** L  
**CONTENT:** 70% Rayon, 26% Nylon, 4% Spandex  
**CARE:** Machine wash with like colors in cold water on the delicate cycle. Only non-chlorine bleach if needed. Lay flat to dry. Steam iron on the reverse side if needed.

**FIT & FEATURES**

- Black
  - High waist
  - Wide waistband
  - Snug fitting
  - Side seam details on legs
  - Sleek ponte double knit
- INSIDER INFO**
- The name says it all! You'll live in these leggings that give you legs for days
- CLIFFSNOTES**
- Your lanky gets swanky in these leggings
  - Lanky legs for days!

3922  
Maestro Trouser<sup>1, 4</sup>

SIZE: 0-20  
INSEAM: 27 IN. | 68.5 CM.  
PRICE: USA 119 | CAN 149 | UK 94



**INVENTORY SIZE:** 8  
**CONTENT:** 68% Rayon, 28% Nylon, 4% Spandex  
**CARE:** Machine wash with like colors in cold water on the delicate cycle. Only non-chlorine bleach if needed. Lay flat to dry. Steam iron on the reverse side if needed.

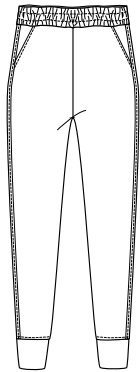
**FIT & FEATURES**

- Black
  - Slim fit
  - Classic rise
  - Pencil trouser
  - Slash pockets
  - Matte black snaps
  - Extended vent at hem
  - Welt pockets in back
  - Diagonal rib ponte knit
- INSIDER INFO**
- On par with the Evening Trouser silhouette
  - Snaps down the side of front pockets
- CLIFFSNOTES**
- Walked right off the pages of *The September Issue*
  - Getting dressed is a snap

LEGGINGS & TROUSERS

JEANS

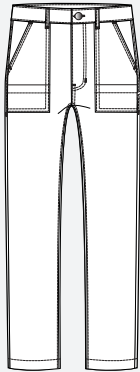
**3923**  
**Pivot Jogger<sup>1</sup>**  
SIZE: XS-XL  
INSEAM: 27 IN. | 68.5 CM.  
PRICE: USA 99 | CAN 119 | UK 78



**INVENTORY SIZE: M**  
CONTENT: 60% Rayon, 35% Nylon, 5% Spandex  
**CARE:** Wash by hand separately with cold water. Only non-chlorine bleach if needed. Do not twist or wring. Lay flat to dry. Steam iron only if needed. Can be machine washed in a mesh bag in cold water on the delicate cycle.

- FIT & FEATURES**
- Olive
  - Easy, slightly slouchy jogger fit with cuffs at hem
  - Wide elastic waist
  - Slash pockets in front, welt/patch pocket in back
  - Chance interlock fabric
- INSIDER INFO**
- Same silhouette and fabric as the Fall '19 Pivot Jogger
- CLIFFSNOTES**
- Comfy bottoms are never going away
  - It ain't broke, so don't worry—we didn't fix it!

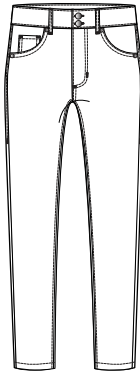
**3926**  
**The Carpenter<sup>1</sup>**  
SIZE: 0-16  
INSEAM: 31 IN. | 79 CM.  
PRICE: USA 119 | CAN 149 | UK 94



**INVENTORY SIZE: 2, 10**  
CONTENT: 59% Lyocell, 38% Cotton, 3% Spandex  
**CARE:** Machine wash separately, inside out, in cold water on the delicate cycle. Do not bleach. Tumble dry low, remove promptly. Warm iron if needed.

- FIT & FEATURES**
- Deep Plum
  - High rise
  - Slim at hips and slim, straight leg
  - Utilitarian details
  - Double patch pockets
  - Painters' loop
  - Patch pockets with flaps in back
  - Lightweight cotton blend fabric with great recovery
- INSIDER INFO**
- Same fabrication as the Spring '20 Discovery Trouser
- CLIFFSNOTES**
- This one "makes" outfits for her living
  - Carry your corkscrew, cocktail, or curling iron

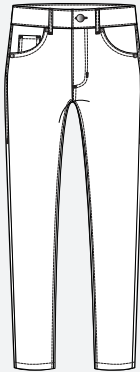
**3938**  
**Cinch Skinny<sup>1</sup>**  
SIZE: 0-20  
INSEAM: 31 IN. | 79 CM.  
PRICE: USA 129 | CAN 159 | UK 99



**INVENTORY SIZE: 4, 12**  
CONTENT: 93% Cotton, 6% Polyester, 1% Spandex  
**CARE:** Machine wash separately, inside out, in cold water on the delicate cycle. Do not bleach. Tumble dry low, remove promptly. Warm iron if needed.

- FIT & FEATURES**
- Sutter's Wash
  - Same cinch fit as previous seasons, with 2 buttons at the wide waistband
  - Mid-weight cotton stretch denim we've used previously
- INSIDER INFO**
- No abrasions or destruction, but plenty of highs and lows
  - Different fabrication than previous Cinch Skinnies
- CLIFFSNOTES**
- Triple threat bestseller—cut, fabric, and fit
  - It's a cinch with every outfit

**3939**  
**High Skinny<sup>1, 4</sup>**  
SIZE: 0-20  
INSEAM: 31 IN. | 79 CM.  
PRICE: USA 139 | CAN 179 | UK 108

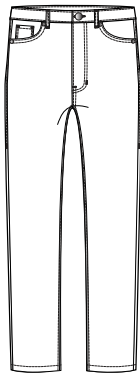


**INVENTORY SIZE: 6**  
CONTENT: 92% Cotton, 6% Polyester, 2% Spandex  
**CARE:** Machine wash separately, inside out, in cold water on the delicate cycle. Do not bleach. Tumble dry low, remove promptly. Warm iron if needed.

- FIT & FEATURES**
- Vapor Wash
  - High rise
  - Skinny fit
  - Silver-tone wash is loaded with details
  - Destruction at the knees
  - Power stretch fabric really holds you in
- INSIDER INFO**
- Brand new denim fabrication
  - Very involved and intricate wash process to achieve this color
- CLIFFSNOTES**
- *Freaky Friday* jeans—your daughter will steal them
  - Power stretch just eclipsed the super stretch

SKIRTS

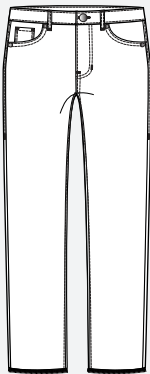
**3940**  
**Higher Straight<sup>1</sup>**  
SIZE: 0-16  
INSEAM: 31 IN. | 79 CM.  
PRICE: USA 129 | CAN 159 | UK 99



**INVENTORY SIZE: 6**  
CONTENT: 93% Cotton,  
6% Polyester, 1% Spandex  
**CARE:** Machine wash separately,  
inside out, in cold water on the  
delicate cycle. Do not bleach.  
Tumble dry low, remove promptly.  
Warm iron if needed.

- FIT & FEATURES**
- Prospector Wash
  - New fit
  - Higher rise
  - Mild abrasions, but no destruction
  - Mid-weight cotton stretch denim we've used previously
- INSIDER INFO**
- Same fit as the Fall '19 Tuxedo High Straight, but 1.5 inch higher rise
- CLIFFSNOTES**
- Forget the mountain, "Ain't no denim high enough!"
  - Now that we've brought you on board...

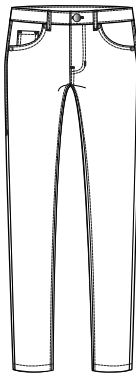
**3937**  
**Slim Boyfriend<sup>1</sup>**  
SIZE: 00-16  
INSEAM: 30 IN. | 76 CM.  
PRICE: USA 139 | CAN 179 | UK 108



**INVENTORY SIZE: 2, 8**  
CONTENT: 93% Cotton,  
6% Polyester, 1% Spandex  
**CARE:** Machine wash separately,  
inside out, in cold water on the  
delicate cycle. Do not bleach.  
Tumble dry low, remove promptly.  
Warm iron if needed.

- FIT & FEATURES**
- Celebrity Wash
  - Same great Slim Boyfriend we know and love
  - 30" inseam, shortened by 1 inch
  - Hand-stamped star print
  - Mid-weight cotton stretch denim we've used previously
  - Darker "dipped in dye" look at the bottom
- INSIDER INFO**
- Intensity of the stars will have some variance
- CLIFFSNOTES**
- No stay stitch at the hem
  - Celebrity wash all-star
  - And the Oscar goes to...

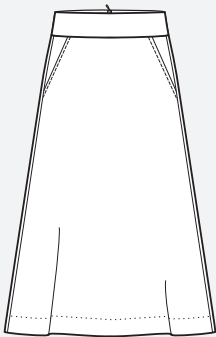
**3941**  
**The Skinny**  
SIZE: 0-16  
INSEAM: 31 IN. | 79 CM.  
PRICE: USA 129 | CAN 159 | UK 99



**INVENTORY SIZE: 4, 10**  
CONTENT: 91% Cotton, 7% Polyester,  
2% Spandex  
**CARE:** Machine wash separately,  
inside out, in cold water on the  
delicate cycle. Do not bleach.  
Tumble dry low, remove promptly.  
Warm iron if needed.

- FIT & FEATURES**
- Coal
  - Classic low rise
  - Skinny fit
  - Clean wash
  - Power-stretch denim
- INSIDER INFO**
- Same denim as the Fall '19 Cinch Skinny
  - Same rise as the Spring '20 Slim Boyfriend
- CLIFFSNOTES**
- If a high waist hits your bra band, these are for you
  - Everything we love, minus the "cinch"

**4023**  
**Houndstooth Skirt**  
SIZE: 0-16  
CENTER BACK LENGTH: 28 IN. | 71 CM.  
PRICE: USA 99 | CAN 119 | UK 78



**INVENTORY SIZE: 4**  
CONTENT: 60% Polyester,  
39% Rayon, 1% Spandex  
**CARE:** Machine wash separately,  
inside out, in cold water on the  
delicate cycle. Only non-chlorine  
bleach if needed. Lay flat to dry.  
Cool iron on the reverse side if  
needed. Can be dry cleaned.

- FIT & FEATURES**
- Black and White
  - High waist
  - Wide waistband
  - A-line shape
  - Hits below the knees
  - Side slit pockets
  - Back zipper
  - Soft and substantial double knit
- INSIDER INFO**
- Pair this skirt with high or over-the-knee boots
- CLIFFSNOTES**
- Midis will be at the max this season
  - Complete the capsule

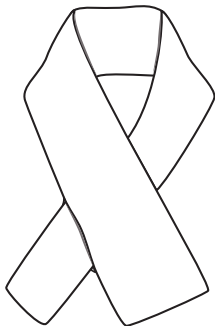
SKIRTS		DRESSES	
<p><b>4024</b> <b>Sinatra Skirt</b></p> <p>SIZE: 0-16 CENTER BACK LENGTH: 38 IN.   96.5 CM. PRICE: USA 99   CAN 119   UK 78</p>  <p><b>INVENTORY SIZE: 8</b> CONTENT: Self: 100% Polyester Lining: 100% Polyester <b>CARE:</b> Turn garment inside out and place in a mesh bag. Machine wash separately in cold water on the delicate cycle. Only non-chlorine bleach if needed. Do not twist or wring. Lay flat to dry. Warm iron if needed. Can be dry cleaned.</p> <hr/> <p><b>FIT &amp; FEATURES</b></p> <ul style="list-style-type: none"> <li>• Baby Dot</li> <li>• Narrow waistband</li> <li>• Side zipper</li> <li>• Fitted at the hips</li> <li>• Easy and flowy to uneven, flouncy hem</li> <li>• Fully lined in solid black</li> <li>• High-low hem</li> <li>• Hits at the mid to low calves</li> <li>• Poly chiffon</li> </ul> <p><b>INSIDER INFO</b></p> <ul style="list-style-type: none"> <li>• Flounce in the skirt is feminine</li> <li>• Pair with the matching Sinatra Blouse</li> </ul> <p><b>CLIFFSNOTES</b></p> <ul style="list-style-type: none"> <li>• Polka dot pizzazz</li> <li>• Easy way to jazz things up</li> </ul> <hr/> <hr/> <hr/>	<p><b>4017</b> <b>Autumn Dress</b></p> <p>SIZE: XS-XL CENTER BACK LENGTH: 51.5 IN.   131 CM. PRICE: USA 149   CAN 189   UK 119</p>  <p><b>INVENTORY SIZE: M</b> CONTENT: Self: 100% Polyester Contrast: 100% Polyester Lining: 100% Polyester <b>CARE:</b> Turn garment inside out and place in a mesh bag. Machine wash separately in cold water on the delicate cycle. Only non-chlorine bleach if needed. Do not twist or wring. Lay flat to dry. Warm iron if needed. Can be dry cleaned.</p> <hr/> <p><b>FIT &amp; FEATURES</b></p> <ul style="list-style-type: none"> <li>• Teal Leaves</li> <li>• 2 pieces, outer dress has easy fit in a maxi length</li> <li>• Banded collar with ruffle all the way around the collar and down the front placket in contrast print</li> <li>• Buttons go all the way through with self-tie belt</li> <li>• Long sleeves</li> <li>• Cuffs and ruffles in contrasting print</li> <li>• Under layer in contrast print, slip style with sliders</li> <li>• Easy fit</li> <li>• Slip hits above the knees</li> <li>• Both pieces in poly crepe</li> </ul> <p><b>INSIDER INFO</b></p> <ul style="list-style-type: none"> <li>• Long, outer layer can be worn buttoned up or open as a duster</li> </ul> <p><b>CLIFFSNOTES</b></p> <ul style="list-style-type: none"> <li>• Fall in love with autumn</li> <li>• Maximum versatility</li> </ul> <hr/> <hr/> <hr/>	<p><b>4018</b> <b>Ellery Dress<sup>1, 4</sup></b></p> <p>SIZE: XXS-XXL CENTER BACK LENGTH: 36.5 IN.   93 CM. PRICE: USA 119   CAN 149   UK 94</p>  <p><b>INVENTORY SIZE: S</b> CONTENT: Self: 100% Polyester Lining: 100% Polyester <b>CARE:</b> Turn garment inside out and place in a mesh bag. Machine wash separately in cold water on the delicate cycle. Only non-chlorine bleach if needed. Do not twist or wring. Lay flat to dry. Warm iron if needed. Can be dry cleaned.</p> <hr/> <p><b>FIT &amp; FEATURES</b></p> <ul style="list-style-type: none"> <li>• Royal Flower</li> <li>• Lined bodice</li> <li>• Long sleeves in single layer of chiffon</li> <li>• Easy fit</li> <li>• Hits above the knees</li> <li>• V-neckline</li> <li>• Wide cuffs with covered buttons</li> <li>• Poly chiffon</li> </ul> <p><b>INSIDER INFO</b></p> <ul style="list-style-type: none"> <li>• Such a stunning print, this piece looks amazing on all shapes and sizes. Try wearing it as tunic over jeans.</li> </ul> <p><b>CLIFFSNOTES</b></p> <ul style="list-style-type: none"> <li>• Plum perfection</li> <li>• Fall floral extravaganza</li> </ul> <hr/> <hr/> <hr/>	<p><b>4016</b> <b>Solace Dress<sup>1</sup></b></p> <p>SIZE: XXS-XL CENTER BACK LENGTH: 34 IN.   86.5 CM. PRICE: USA 99   CAN 119   UK 78</p>  <p><b>INVENTORY SIZE: M</b> CONTENT: Self: 66% Rayon, 31% Polyester, 3% Spandex Contrast: 59% Modal, 36% Cotton, 5% Spandex <b>CARE:</b> Turn garment inside out and place in a mesh bag. Machine wash separately in cold water on the delicate cycle. Only non-chlorine bleach if needed. Do not twist or wring. Lay flat to dry. Steam iron only if needed. Do not press with flat iron. Can be dry cleaned.</p> <hr/> <p><b>FIT &amp; FEATURES</b></p> <ul style="list-style-type: none"> <li>• Olive</li> <li>• Same super soft fabrication as the Fall '19 PJ Dress</li> <li>• Cowl neckline done in a ribbed knit</li> <li>• Long raglan sleeves</li> <li>• Drawstring in back to cinch in</li> <li>• Hits above the knees</li> <li>• Rayon-blend knit</li> </ul> <p><b>INSIDER INFO</b></p> <ul style="list-style-type: none"> <li>• This dress is chic and trendy, but it's so soft that you'll feel like you're wearing your PJs. Cinch in the back waist to add shape.</li> </ul> <p><b>CLIFFSNOTES</b></p> <ul style="list-style-type: none"> <li>• Comfort in a cinch</li> <li>• This is a cinch for all you PJ Dress fans</li> </ul> <hr/> <hr/> <hr/>

ACCESSORIES

JEWELRY

4029  
Bundle Up Scarf<sup>1</sup>

PRICE: USA 69 | CAN 89 | UK 54



**INVENTORY SIZE: ONE SIZE**  
**CONTENT:** Faux Fur: 100% Polyester  
**CARE:** Dry clean for best results. Can be machine washed in a mesh bag in cold water on the delicate cycle. Only non-chlorine bleach if needed. Lay flat to dry. Steam iron only if needed.

**FIT & FEATURES**

- Leopard
- Narrow end fits through a slit on wide end
- Poly fur

**INSIDER INFO**

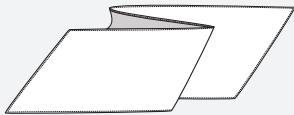
- The coziest, face-framing scarf we have ever offered! And it's a skin print, so who can resist?

**CLIFFSNOTES**

- Hey all you cool cats and kittens!
- It's a scarf, travel neck pillow, and more

4030  
Fable Scarf<sup>1</sup>

PRICE: USA 54 | CAN 64 | UK 42



**INVENTORY SIZE: ONE SIZE**  
**CONTENT:** 100% Silk  
**CARE:** Wash by hand separately with cold water. Only non-chlorine bleach if needed. Do not twist or wring. Lay flat to dry. Steam press back to shape. Can be dry cleaned.

**FIT & FEATURES**

- Animal
- Same style and fabrication as the Fall '19 Delight Scarf

**INSIDER INFO**

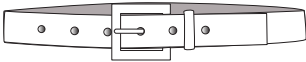
- Mix of cheetah, leopard, and zebra print
- Terra-cotta colored stripe trim

**CLIFFSNOTES**

- Tell someone wild stories with this one
- The animals come to life

4031  
Stud Belt<sup>1</sup>

SIZE: XS-XL  
LENGTH: 29.5 IN. | 75 CM. XS; 32 IN. | 81 CM. S; 34.5 IN. | 87.5 CM. M; 37.5 IN. | 95 CM. L; 40.5 IN. | 103 CM. XL  
PRICE: USA 119 | CAN 149 | UK 94



**INVENTORY SIZE: M**  
**CONTENT:** Genuine Leather

**FIT & FEATURES**

- Multi Stud
- Black buckle
- Silver, gold, and black studs

**INSIDER INFO**

- A tough belt to go with your more feminine pieces

**CLIFFSNOTES**

- Biker chic
- THE statement belt

2188  
Charming Earrings

LENGTH: 2 IN. | 5 CM.  
PRICE: USA 49 | CAN 59 | UK 38



**INVENTORY SIZE: ONE SIZE**  
**CONTENT:** Brass charms, hoops, clasps, and rings with zinc cast. Crystal and colored stones and epoxy.  
**CARE:** Made in China. Not intended for children under 15.

**FIT & FEATURES**





- Antique Gold
- Vintage-inspired floral charm and small black enamel charm

**INSIDER INFO**

- Matches the Charming Necklace



JEWELRY

<p><b>2187</b> <b>Charming Necklace</b> LENGTH: 18 IN.   45.75 CM. PRICE: USA 89   CAN 109   UK 69</p>  <p><b>INVENTORY SIZE: ONE SIZE</b> CONTENT: Brass chains, charms, bars, clasps, rings, and logo casing with zinc cast. Crystal and colored stones, epoxy, and cubic zirconia logo stone. CARE: Made in China. Not intended for children under 15.</p> <p><b>FIT &amp; FEATURES</b></p> <ul style="list-style-type: none"><li>• Antique Gold</li><li>• Short necklace</li><li>• Vintage-inspired floral charm and small black enamel charm</li><li>• Front closure</li></ul> <p><b>INSIDER INFO</b></p> <ul style="list-style-type: none"><li>• Inspired by a YSL pin</li></ul>	<p><b>2182</b> <b>Heart of Gold Earrings</b> LENGTH: 1.75 IN.   4.5 CM. PRICE: USA 49   CAN 59   UK 38</p>  <p><b>INVENTORY SIZE: ONE SIZE</b> CONTENT: Brass casings and connector rings with zinc cast. Crystal colored stones, acrylic pearl, cubic zirconia logo stone, and surgical steel posts. CARE: Made in China. Not intended for children under 15.</p> <p><b>FIT &amp; FEATURES</b></p> <ul style="list-style-type: none"><li>• Antique Gold</li><li>• Vintage-inspired statement earrings with heart charm</li><li>• Pearls and colored stones</li></ul> <p><b>INSIDER INFO</b></p> <ul style="list-style-type: none"><li>• Matches the Heart of Gold Necklace</li></ul>	<p><b>2181</b> <b>Heart of Gold Necklace</b> LENGTH: 30.5 IN.   77.5 CM. PRICE: USA 89   CAN 109   UK 69</p>  <p><b>INVENTORY SIZE: ONE SIZE</b> CONTENT: Brass chains, heart charm, clasps, rings, and logo casing with zinc cast. Crystal colored stones, acrylic pearl, and cubic zirconia logo stone. CARE: Made in China. Not intended for children under 15.</p> <p><b>FIT &amp; FEATURES</b></p> <ul style="list-style-type: none"><li>• Antique Gold</li><li>• Long necklace</li><li>• Vintage-inspired statement necklace with heart charm</li><li>• Pearls and colored stones</li></ul> <p><b>INSIDER INFO</b></p> <ul style="list-style-type: none"><li>• Reversible</li><li>• Statement piece</li></ul>	<p><b>2186</b> <b>Honey Earrings</b> LENGTH: 1.25 IN.   3 CM. PRICE: USA 39   CAN 49   UK 32</p>  <p><b>INVENTORY SIZE: ONE SIZE</b> CONTENT: Brass hoops, balls, and charms with zinc cast. Brass balls with worn silver cast, cubic zirconia stones, and surgical steel posts. CARE: Made in China. Not intended for children under 15.</p> <p><b>FIT &amp; FEATURES</b></p> <ul style="list-style-type: none"><li>• Antique Gold and Silver</li><li>• Small hoop with small honeybee charm</li></ul> <p><b>INSIDER INFO</b></p> <ul style="list-style-type: none"><li>• Matches the Honey Necklace</li></ul>
--	--	---	--



2185  
Honey Necklace

LENGTH: 16 IN. | 40.75 CM.; 22 IN. | 56 CM.  
PRICE: USA 79 | CAN 99 | UK 62



**INVENTORY SIZE: ONE SIZE**  
**CONTENT:** Brass chains, charms, clasps, rings, and logo casing with zinc cast. Cubic zirconia logo stone.  
**CARE:** Made in China. Not intended for children under 15.

**FIT & FEATURES**

- Antique Gold and Silver
- Two necklaces
  - Shorter necklace: charm with honeybee
  - Longer necklace: ring with small charm

**INSIDER INFO**

- Twofer piece, can wear each strand on its own

2184  
Reign Earrings

LENGTH: 2.5 IN. | 6 CM.  
PRICE: USA 39 | CAN 49 | UK 32



**INVENTORY SIZE: ONE SIZE**  
**CONTENT:** Brass chains, charms, and rings with zinc cast, crystal, and cubic zirconia stones. Surgical steel posts.  
**CARE:** Made in China. Not intended for children under 15.

**FIT & FEATURES**

- Antique Gold and Silver
  - Delicate everyday piece
  - Small oval charm with crown
- INSIDER INFO**
- Matches the Reign Necklace

2183  
Reign Necklace

LENGTH: 18 IN. | 45.75 CM.  
PRICE: USA 59 | CAN 74 | UK 46



**INVENTORY SIZE: ONE SIZE**  
**CONTENT:** Brass chains, charms, clasps, rings, and logo casing with zinc cast. Cubic zirconia logo stone.  
**CARE:** Made in China. Not intended for children under 15.

**FIT & FEATURES**

- Antique Gold and Silver
  - Short necklace
  - Delicate everyday piece
  - Small oval charm with crown
- INSIDER INFO**
- This is an everyday piece that works on its own, but looks great paired with bold statement pieces as well. Try it with or without the matching earrings.







FOLLOW US     

© 2020 cabi, LLC. Content and Images All Rights Reserved.